

Riding Lawn Tractors

100, X300, X500, and X700 Series



JOHN DEERE

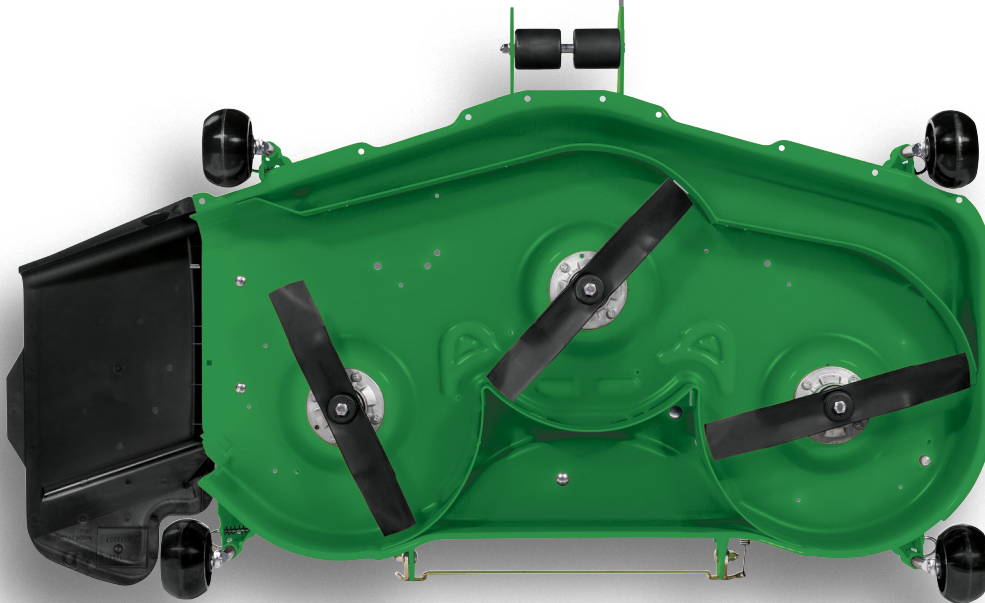


Riding Lawn Tractors

Take the hard work out of lawn work

Make the most of your mowing, and more. Our lawn tractors handle any job on your to-do list. Haul, bag or mulch—with our range of attachments and options, you can count on a quality cut, all year round. Read on, and discover how you can do more with a John Deere mower.

The Accel Deep™ mower deck
Dozens of prototypes discarded. Hundreds of hours of simulations and real world testing. This is how to mow well fast.



Cutting height adjuster

Cutting height can be adjusted in 0.64 cm (¼ in.) increments for a precise, even cut.



Twin Touch™ System

Twin Touch™ automatic transmission lets you easily change from forward to reverse with two-pedal foot control for effortless speed and direction changes.



30-Second Oil Change System

Groundbreaking. We've changed the oil change with the John Deere Easy Change™ 30-Second Oil Change System on select 100 Series models.



MulchControl™ Kit with One Touch Technology

Mulch on. Mulch off. Mulch the easy way with the push of a button. Available with Accel Deep™ Mower Decks on Select Series Tractors.

X700 Signature Series

There's always something to do around the yard

Productivity and versatility are key to how we run, too. That's why the Signature Series is engineered to mulch, haul, bag, fertilise, seed, sweep and, of course, mow. You just need the right attachment or implement.

Adding a 3-point hitch is a great place to start. Put our heavy-duty transmission and thick C-channel frame to the test and take on the toughest yard jobs. That's how we run. Nothing runs like a Deere.

BUMPER-TO-BUMPER
4-YEAR / 700-HOUR
WARRANTY**



A high-capacity mower deck, solid stamped out of 9-gauge steel to handle the tall stuff.



With an AutoConnect deck, attaching and removing your mower deck is easier than ever. Drive over ramps can quickly be removed, without tools, for access to mower deck.

The dashboard approach — Electronic Fuel Gauge. Engine Temperature Gauge. Tachometer with Best Cut Target Zone. An Electric Power Take-Off (PTO) engagement indicator. All at a glance and within easy reach.

**Term limited to 4 years or 700 hours used, whichever comes first, and varies by model. See Agriculture and Turf equipment Warranty Statement at JohnDeere.com.au or JohnDeere.co.nz for details.

High-performance electronic fuel injected (EFI) gas engines and Final Tier 4 diesel engines offer torque and power to spare.

Optional MulchControl™ Kit — Mulch the easy way—with the flip of a lever.

Steering wheel — Standard tilt steering adjusts to your height and delivers the ultimate in comfort.

12-volt outlet — Plug in a sprayer or an electric spreader.

Tool box — Storage for work gloves or sunglasses to your favourite hat.

The dashboard approach — Electronic fuel gauge. Engine temperature gauge. Tachometer with Best Cut target zone. Electric power take-off (PTO) engagement indicator. All at a glance and within easy reach.

Stylish hood — The exclusive design provides superior cooling and durability.

Mower deck — The 48 in. Accel Deep™ mower deck is perfect for narrow pathways and gate entrances, while our 54 and 60 in. high-capacity decks are solid stamped out of 9-gauge steel.



Air ride seat option

Effortlessly adjust the seat suspension to your liking with the flip of a switch.





X500 Select Series

Multi-terrain and multi-talented

The X500 Series lets you mow with precision, faster. But a quality cut is just the start of what the tractors can do. Mulch your lawn, negotiate steep inclines with complete confidence, and go where you need to go. Heavy-duty frames support heavy-duty work. Increase traction with foot-operated traction control. Add the optional MulchControl™ Kit to make feeding your lawn a snap.

BUMPER-TO-BUMPER
4-YEAR /500-HOUR
WARRANTY**

**Term limited to 4 years or 500 hours used, whichever comes first, and varies by model. See Agriculture and Turf equipment Warranty Statement at JohnDeere.com.au or JohnDeere.co.nz for details.

53 cm (21 in.) cut and sewn seat with spring suspension provides a smooth comfortable ride on uneven terrain (Standard on the X580, X584, and X590).

Control console. Ergonomic design and colour-coded for easy identification.

X590 Electronic throttle control. Instantly responds to deliver engine power and eliminate bogging down.

iTorque™ power system. Provides plenty of power and torque for excellent performance in any operating condition.



Four-wheel steering. All four wheels on the X584 steer the tractor for ultimate trimmability.

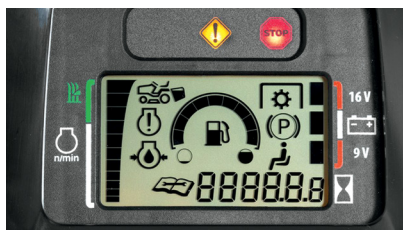
Hydraulic power steering. Makes 4-wheel steering even easier and provides excellent manoeuvrability. 30 cm (12 in.) uncut circle radius on the X584 with 54 in. mower. (Standard on the X584).

MulchControl™ Kit with One Touch Technology. Available with Accel Deep™ Mower Decks on Select Series Tractors.



Accel Deep™ Mower Decks

The deeper “draw” and flat top design create a better quality of cut at faster ground speeds.



Easy-to-read display

Displays engine speed and target zone for best cut quality.



Traction assist

Locks the rear transaxle, so both rear wheels work together with maximum traction. Exceptionally effective at climbing or negotiating muddy ground.





A cut above. And beyond.

Our riding lawn tractors will put yardwork on your GET-to-do list. Because they've been engineered from the deck up to blend performance with remarkable comfort. Features like MulchControl™, Twin Touch™ foot pedals and four-wheel steering turn big jobs into big fun. And with the ability to bag leaves, your tractor will never take a season off.



X300 Select Series

Performance meets power

Get a beautiful cut in a matter of minutes with the X380 lawn tractor. With the comfortable 45.7 cm (18 in.) cut-and-sewn seat standard and optional 48 and 54 in. Accel Deep™ Mower Decks that cut clean, even passes even at faster speeds. Add a Utility Cart to haul away most anything a lawn can throw at you.

BUMPER-TO-BUMPER
4-YEAR / 300-HOUR
WARRANTY**



Easy-to-read display

Displays engine speed and target zone for the best cut quality.



Exact adjust deck levelling system

This exclusive feature allows you to conveniently level the deck from just below the seat.



Twin Touch™ System

Automatic transmission lets you easily change from forward to reverse with two-pedal foot control.



Rear collection



MulchControl™ Kit with One Touch Technology

Cut grass clippings down to size, so they are easily absorbed in your lawn. Or side discharge or bag.

Four-wheel steering

Designed for ultimate trimmability. All four wheels steer the tractor instead of just the front two. Available on X354, X384.



100 Series

Your lawn will thank you

Built in Greeneville, TN, our 100 Series Lawn Tractors are our affordable, comfortable, easy-to-use lawn tractor line-up. Lift the hood and check out the Easy Change™ 30-Second Oil Change System (not available on the X147R, X167R, S100, S110 and S140). This all-in-one oil and oil filter* is so easy to take off and put on, you can be done in 30 seconds, max. No mess.

No fuss. No problem. Twist. Lock. Done.

Then step on it. The two side-by-side forward and reverse pedals available on all 100 Series are made for your right foot. Now, sit down. The ergonomic operator station is welcoming. The seat, adjustable. The design of the mower deck lift is even shaped to minimize the effort required to raise or lower the deck. And that's just for starters.

BUMPER-TO-BUMPER
2-YEAR /120-HOUR
WARRANTY**





Easy read fuel gauge

(available on S120 and S130)



38 cm seat

(available on S110, S120, S130, S140, X147R and X167R)



Electric PTO

Available on some models, provides instant engagement of mower blades (available on X147R, X167R, S130 and S140).



John Deere Easy Change™

30-Second Oil Change System. No mess. No fuss. No problem. The oil and oil filter are all-in-one.* Twist. Lock. Done. (available on S120 and S130).



The convenient mower deck lift lever

0.64 cm (1/4 in.) height-of-cut increment adjustment is as precise as ever.



Twin Touch™

Easily change from forward to reverse with two-pedal foot control available on all 100 Series Lawn Tractors.

*Changing the filter removes the captured contaminants and replaces about 0.76 L of engine oil.

**Term limited to 2 years or 120 hours used, whichever comes first, and varies by model. See Agriculture and Turf equipment Warranty Statement at JohnDeere.com.au or JohnDeere.co.nz for details.

Specifications

Model	X730	X734 (4WS)	X738 (4WD)
Power systems			
Engine Model	FD750D EFI iTorque™ Power System	FD750D EFI Torque™ Power System	FD750D EFI Torque™ Power System
Engine power	25.5 hp* (19 kW)	25.5 hp* (19 kW)	25.5 hp* (19 kW)
Displacement	745 cc (45.5 cu in.)	745 cc (45.5 cu in.)	745 cc (45.5 cu in.)
Cooling	Liquid	Liquid	Liquid
Cylinders	V-Twin	V-Twin	V-Twin
Fuel system			
Capacity	19.7 L	19.7 L	19.7 L
Fuel type	Petrol	Petrol	Petrol
Ignition			
Electrical system	20 amp, regulated	20 amp, regulated	20 amp, regulated
Fuel delivery system	Electronic fuel injection	Electronic fuel injection	Electronic fuel injection
Transmission			
Drive system	Hydrostatic, 2-wheel drive	Hydrostatic, 2-wheel drive	Hydrostatic, Full-time 4-wheel drive
Forward speed	0-13.7 km/h (0-8.5 mph)	0-13.7 km/h (0-8.5 mph)	0-13.7 km/h (0-8.5 mph)
Reverse speed	0-8.1km/h (0-5 mph)	0-8.1km/h (0-5 mph)	0-8.1km/h (0-5 mph)
Brakes			
	Internal wet disc	Internal wet disc	Internal wet disc
Steering			
	Power, 2-wheel steer	Power, 4-wheel steer	Power, 2-wheel steer
Turning radius			
	635 mm (25 in.)	533 mm (21 in.)	635 mm (25 in.)
Uncut circle radius			
	711 mm (28 in.) w/ 60 in. HC Mower	152 mm (6 in.) w/ 60 in. HC Mower	711 mm (28 in.) w/ 60 in. HC Mower
Seat			
	533 mm (21 in.) 2-piece adjustable back angle	533 mm (21 in.) 2-piece adjustable back angle	533 mm (21 in.) 2-piece adjustable back angle
Tyres			
Front	Turf 18x8.50-8	Turf 18x7.00-8	Heavy-Duty All Purpose 18x8.50-10
Rear	Turf 26x12-12	Turf 26x10.50-12	Heavy-Duty All Purpose 26x12-12
Lift system			
	Hydraulic	Hydraulic	Hydraulic
PTO			
	Hydraulic clutch	Hydraulic clutch	Hydraulic clutch
Dimensions			
Height	1340 mm (52.9in.)	1340 mm (52.9in.)	1340 mm (52.9in.)
Length, overall	2010 mm (79.2 in.)	2010 mm (79.2 in.)	2010 mm (79.2 in.)
Min. storage width (chute up)	1575 mm (62 in.) w/ 60 in. Mower	1461 mm (57.5 in.) w/ 54 in. Mower	1575 mm (62 in.) w/ 60 in. Mower
Wheelbase	1384 mm (54.5 in.)	1384 mm (54.5 in.)	1415 mm (55.7 in.)
Weight, tractor (no fuel) and mower	489 kg (1,078 lb) w/ 54 in. Mower	514 kg (1,133 lb) w/ 54 in. Mower	530 kg (1,168 lb) w/ 54 in. Mower
Mower options			
Cutting width	1219 mm Accel Deep™ Mower (48 in.) 1372 mm High Capacity (54 in.) 1524 mm High Capacity (60 in.)	1219 mm Accel Deep™ Mower (48 in.) 1372 mm High Capacity (54 in.) 1524 mm High Capacity (60 in.)	1219 mm Accel Deep™ Mower (48 in.) 1372 mm High Capacity (54 in.) 1524 mm High Capacity (60 in.)
Bumper-to-Bumper Warranty**			
	4 year / 700 hours	4 year / 700 hours	4 year / 700 hours

*The engine horsepower and torque information are provided by the engine manufacturer to be used for comparison purposes only. Actual operating horsepower and torque will be less. Refer to the engine manufacturer's web site for additional information.

**Term limited to years or hours used, whichever comes first, and varies by model. See Agriculture and Turf equipment Warranty Statement at JohnDeere.com.au or JohnDeere.com.nz for details.

X739 (4WD, 4WS)	X750	X754 (4WS)	X758 (4WD)
FD750D EFI iTorque™ Power System	Yanmar 3TNM74F	Yanmar 3TNM74F	Yanmar 3TNM74F
25.5 hp* (19 kW)	24 hp* (17.9 kW)	24 hp* (17.9 kW)	24 hp* (17.9 kW)
745 cc (45.5 cu in.)	993 cc (60.6 cu in.)	993 cc (60.6 cu in.)	993 cc (60.6 cu in.)
Liquid	Liquid	Liquid	Liquid
V-Twin	3	3	3
19.7 L	19.7 L	19.7 L	19.7 L
Petrol	Diesel	Diesel	Diesel
20 amp, regulated	40 amp, regulated	40 amp, regulated	40 amp, regulated
Electronic fuel injection	Indirect injection	Indirect injection	Indirect injection
Hydrostatic, Full-time 4-wheel drive	Hydrostatic, 2-wheel drive	Hydrostatic, 2-wheel drive	Hydrostatic, Full-time 4-wheel drive
0-13.7 km/h (0-8.5 mph)	0-13.7 km/h (0-8.5 mph)	0-13.7 km/h (0-8.5 mph)	0-13.7 km/h (0-8.5 mph)
0-8.1km/h (0-5 mph)	0-8.1km/h (0-5 mph)	0-8.1km/h (0-5 mph)	0-8.1km/h (0-5 mph)
Internal wet disc	Internal wet disc	Internal wet disc	Internal wet disc
Power, 4-wheel steer	Power, 2-wheel steer	Power, 4-wheel steer	Power, 2-wheel steer
533 mm (21 in.)	635 mm (25 in.)	533 mm (21 in.)	635 mm (25 in.)
152 mm (6 in.) w/ 60 in. HC Mower	711 mm (28 in.) w/ 60 in. HC Mower	152 mm (6 in.) w/ 60 in. HC Mower	711 mm (28 in.) w/ 60 in. HC Mower
533 mm (21 in.) 2-piece adjustable back angle	533 mm (21 in.) 2-piece adjustable back angle	533 mm (21 in.) 2-piece adjustable back angle	533 mm (21 in.) 2-piece adjustable back angle
Heavy-Duty All Purpose 18x8.50-10	Turf 18x8.50-8	Turf 18x7.00-8	Heavy-Duty All Purpose 18X8.50-10
Heavy-Duty All Purpose 26x12-12	Turf 26x12-12	Turf 26x10.50-12	Heavy-Duty All Purpose 26x12-12
Hydraulic	Hydraulic	Hydraulic	Hydraulic
Hydraulic clutch	Hydraulic clutch	Hydraulic clutch	Hydraulic clutch
1340 mm (52.9 in.)	1348 mm (53.1 in.)	1348 mm (53.1 in.)	1348 mm (53.1 in.)
2010 mm (79.2 in.)	1905 mm (75 in.)	1905 mm (75 in.)	1905 mm (75 in.)
1461 mm (57.5 in.) w/ 54 in. Mower	1575 mm (62 in.) w/ 60 in. Mower	1461 mm (57.5 in.) w/ 54 in. Mower	1575 mm (62 in.) w/ 60 in. Mower
1415 mm (55.7 in.)	1384 mm (54.5 in.)	1384 mm (54.5 in.)	1415 mm (55.7 in.)
569 kg (1,255 lb) w/ 54 in. Mower	528 kg (1,163 lb) w/ 54 in. Mower	552 kg (1,218 lb) w/ 54 in. Mower	568 kg (1,253 lb) w/ 54 in. Mower
1219 mm Accel Deep™ Mower (48 in.) 1372 mm High Capacity (54 in.) 1524 mm High Capacity (60 in.)	1219 mm Accel Deep™ Mower (48 in.) 1372 mm High Capacity (54 in.) 1524 mm High Capacity (60 in.)	1219 mm Accel Deep™ Mower (48 in.) 1372 mm High Capacity (54 in.) 1524 mm High Capacity (60 in.)	1219 mm Accel Deep™ Mower (48 in.) 1372 mm High Capacity (54 in.) 1524 mm High Capacity (60 in.)
4 year / 700 hours	4 year / 700 hours	4 year / 700 hours	4 year / 700 hours

Specifications

Model	X570 / X580	X584 / X590	X350
Power Systems			
Engine Model	FS730V iTorque™ Power System	FS730V iTorque™ Power System / FS730V EFI iTorque™ Power System	FR651V iTorque™ Power System
Engine power	24 hp* (17.9 kW)	24 hp* (17.9 kW) / 25.5 hp* (19.0 kW)	21.5 hp* (16.0 kW)
Displacement	726 cc (44.3 cu in.)	726 cc (44.3 cu in.)	726 cc (44.3 cu in.)
Cooling	Air	Air	Air
Governor	Mechanical	Mechanical / Electronic throttle control	Mechanical
Cylinder configuration	V-twin	V-twin	V-twin
Electrical system	12 volts, 15 amp regulated	12 volts, 15 amp regulated	12 volts, 14 amp regulated
Dash display			
Fuel gauge	Yes	Yes	Yes
Fuel system			
Fuel tank capacity	16.7 L	16.7 L	12.5 L
Transmission			
Forward speed	0-11.6 km/h (0-7.2 mph)	0-11.6 km/h (0-7.2 mph)	0-8.2 km/h (0-5.1 mph)
Reverse speed	0-8.4 km/h (0-5.2 mph)	0-8.4 km/h (0-5.2 mph)	0-5.9 km/h (0-3.7 mph)
Steering			
	Low effort, 2-wheel steer / Power, 2-wheel steer	Power, 4-wheel steer / Power, 2-wheel steer	Low effort, 2-wheel steer
Tilt wheel	No	Yes, 5 position	No
Front axle	Cast iron	Cast iron	Cast iron
Turning radius	40.6 cm (16 in.) / 55.9 cm (22 in.)	48.3 cm (19 in.) / 55.9 cm (22 in.)	40.6 cm (16 in.)
Uncut circle radius	58 cm (23 in.) w/48A Mower or 51 cm (20 in.) w/54A Mower / 61 cm (24 in.) w/54A Mower	38 cm (15 in.) w/48A Mower or 30 cm (12 in.) w/54A Mower / 69 cm (27 in.) w/48A Mower or 61 cm (24 in.) w/54A Mower	66 cm (26 in.) w/42A Mower or 53 cm (21 in.) w/48A Mower
Seat			
	38.1 cm (15 in.) open back with grasp / 53.3 cm (21 in.) cut and sewn	53.3 cm (21 in.) cut and sewn	38.1 cm (15 in.) open back w/ grasp
Lift system			
Type	Foot pedal with adjustable spring assist / Hydraulic	Hydraulic	Foot pedal with optional spring assist (48A Mower)
Tyres			
Type	Turf (front and rear) / Turf (front), and Heavy-Duty All-Purpose (rear)	Turf (front and rear) / Turf (front), and Heavy-Duty All-Purpose (rear)	Turf
Front	15x6.5-8 / 16x6.5-8	16x6.5-8	15x6-6
Rear	24x12-12 / 24x12-12	24x9.5-12 / 24x12-12	20x10-8
Dimensions			
Height	122 cm (48 in.)	122 cm (48 in.)	109 cm (43 in.)
Wheelbase	130 cm (51.2 in.)	130 cm (51.2 in.)	125 cm (49.4 in.)
Overall length	201 cm (79 in.)	201 cm (79 in.)	183 cm (72 in.)
Min. storage width (deflector up)	136 cm (53.6 in.) w/48 in. Accel Deep™ or 151 cm (59.4 in.) w/54 in. Accel Deep™	136 cm (53.6 in.) w/48 in. Accel Deep™ or 151 cm (59.4 in.) w/54 in. Accel Deep™	128 cm (50.5 in.) w/42 in. Accel Deep™ or 136 cm (53.6 in.) w/48 in. Accel Deep™
Weight, tractor (no fuel) and mower	339 kg (748 lb) w/48 in. Accel Deep™, 343 kg (756 lb) w/54 in. Accel Deep™ / 357 kg (787 lb) w/54 in. Accel Deep™	380 kg (837 lb) w/48 in. Accel Deep™ or 383 kg (845 lb) w/54 in. Accel Deep™ / 362 kg (797 lb) w/48 in. Accel Deep™ or 365 kg (805 lb) w/54 in. Accel Deep™	280 kg (596 lb) w/48 in. Accel Deep™
Mower deck options			
	48 in. Accel Deep™ or 54 in. Accel Deep™ / 54 in. Accel Deep™	48 in. Accel Deep™ or 54 in. Accel Deep™	42 in. Accel Deep™ or 42 in. Mulch option or 48 in. Accel Deep™
Bumper-to-Bumper Warranty**			
	4 year/500 hours	4 year/500 hours	4 year/300 hours

*The engine horsepower and torque information are provided by the engine manufacturer to be used for comparison purposes only. Actual operating horsepower and torque will be less. Refer to the engine manufacturer's web site for additional information.

**Term limited to years or hours used, whichever comes first, and varies by model. See Agriculture and Turf equipment Warranty Statement at JohnDeere.com.au or JohnDeere.com.cz for details.

X354 (4WS)	X380	X384 (4WS)	X350R
FR651V iTorque™ Power System	FR691V iTorque™ Power System	FR691V iTorque™ Power System	FR651V iTorque™ Power System
21.5 hp* (16.0 kW)	23 hp* (17.2 kW)	23 hp* (17.2 kW)	21.5 (16 kW)
726 cc (44.3 cu in.)	726 cc (44.3 cu in.)	726 cc (44.3 cu in.)	726 cc (44.3 cu in.)
Air	Air	Air	Air
Mechanical	Mechanical	Mechanical	Mechanical
V-twin	V-twin	V-twin	V-twin
12 volts, 12 amp regulated	12 volts, 12 amp regulated	12 volts, 12 amp regulated	12 volts, 12 amp regulated
Yes	Yes	Yes	Low fuel indicator
12.5 L	12.5 L	12.5 L	7.6 L
0-8.2 km/h (0-5.1 mph)	0-10 km/h (0-6.2 mph)	0-9.5 km/h (0-5.9 mph)	0-8.5 km/h (0-5.3 mph)
0-5.9 km/h (0-3.7 mph)	0-5.6 km/h (0-3.5 mph)	0-5.6 km/h (0-3.5 mph)	0-6.4 km/h (0-4 mph)
Low effort, 4-wheel steer	Low effort, 2-wheel steer	Low effort, 4-wheel steer	Low effort, 2-wheel steer
No	No	No	No
Cast iron	Cast iron	Cast iron	Cast iron
38.1 cm (15 in.)	40.6 cm (16 in.)	38.1 cm (15 in.)	42 cm (16.5 in.)
38 cm (15 in.) w/42A Mower	53 cm (21 in.) w/48A Mower or 46 cm (18 in.) w/54A Mower	23 cm (9 in.) w/48A Mower	Right 58 cm (23 in.), Left 71 cm (28 in.) with 42R Mower
45.7 cm (18 in.) cut-and-sewn	45.7 cm (18 in.) cut-and-sewn	45.7 cm (18 in.) cut-and-sewn	38.1 cm (15 in.) open back w/ grasp
Foot pedal	Foot pedal with spring assist	Foot pedal with spring assist	Foot pedal with spring assist
Turf	Turf	Turf	Turf
15x6-6	15x6.5-8	15x6-6	15x6-6
20x10-10	22x11-10	20x10-10	20x10-8
109 cm (43 in.)	109 cm (43 in.)	109 cm (43 in.)	109 cm (43 in.)
125 cm (49.4 in.)	125 cm (49.4 in.)	125 cm (49.4 in.)	125 cm (49.4 in.)
183 cm (72 in.)	183 cm (72 in.)	183 cm (72 in.)	183 cm (72 in.)
128 cm (50.5 in.) w/42 Accel Deep™ Mower	136 cm (53.6 in.) w/48 in. Accel Deep™ Mower or 151 cm (59.4 in.) w/54 in. Accel Deep™ Mower	136 cm (53.6 in.) w/48 in. Accel Deep™ Mower	111 cm (43.8 in.) with 42 in. rear discharge, rear collect mower
285 kg (628 lb) w/42 in. Accel Deep™	288 kg (636 lb) w/48 in. Accel Deep™ or 298 kg (656 lb) w/54 in. Accel Deep™	311 kg (685 lb) w/48 in. Accel Deep™	293 kg (646 lb) w/42 in. mower
42 in. Accel Deep™	48 in. Accel Deep™ or 54 in. Accel Deep™	48 in. Accel Deep™	42 in. rear discharge and collect with standard mulch plug
4 year/300 hours	4 year/300 hours	4 year/300 hours	4 year/300 hours

Specifications

Model	X147R /X167R	S100/S110	S120 /S130	S140
Power Systems				
Engine Model	Briggs & Stratton 40N8	Briggs & Stratton 31R9/ Briggs & Stratton 33R8	Briggs & Stratton 44N6	Briggs & Stratton 44N6
Horsepower*	16.6 hp (12.4 kW)	17.5 hp (13.0 kW) / 19.0 hp (14.2 kW)	22 hp (16.4 kW)	22 hp (16.4 kW)
Cylinders	Two	One	V-twin	V-twin
Displacement	656 cc (40 cu in.)	500 cc (30.5 cu in.) / 540 cc (33 cu in.)	724 cc (44 cu in.)	724 cc (44 cu in.)
Oil Filter	Traditional	Traditional	John Deere Easy Change™ 30-Second Oil Change System***	Traditional
Air Filter	Cartridge	Cartridge	Cartridge	Cartridge
Mower Deck				
Cut Width	92 cm (36 in.) / 107 cm (42 in.)	107 cm (42 in.)	107 cm (42 in.)	122 cm (48 in.)
Cutting Blades	Two	Two	Two	Three
Cut Height	25.4 to 102 mm (1 to 4 in.)	25.4 to 102 mm (1 to 4 in.)	25.4 to 102 mm (1 to 4 in.)	25.4 to 102 mm (1 to 4 in.)
Mower Deck Material	Stamped steel	Stamped steel	Stamped steel	Stamped steel
Blade Engagement / PTO	Electric	Manual	Manual / Electric	Electric
Transmission				
Type	Hydrostatic	Hydrostatic	Hydrostatic	Hydrostatic
Turning Radius				
	55.2 cm (21.75 in.)	46 cm (18 in.)	46 cm (18 in.)	46 cm (18 in.)
Electrical System				
Capacity	8 amp	8 amp	8 amp	8 amp
Fuel System				
Fuel Gauge	Mechanical	Mechanical	Yes	Mechanical
Fuel Tank Capacity	7.60 L	9.08 L	9.08 L	9.08 L
Type of Fuel	Petrol	Petrol	Petrol	Petrol
Fuel Filter	Replaceable, in fuel line	Replaceable, in fuel line	Replaceable, in fuel line	Replaceable, in fuel line
Travel Speed				
Forward	8.4 km/h (0-5.2 mph)	8.9 km/h (0-5.5 mph)	8.9 km/h (0-5.5 mph)	8.9 km/h (0-5.5 mph)
Reverse	4.8 km/h (0-3 mph)	4.8 km/h (0-3.0 mph)	4.8 km/h (0-3.0 mph)	4.8 km/h (0-3.0 mph)
Seat				
Height	38.1 cm (15 in.)	27.9 cm (11 in.) / 38.1 cm (15 in.) one piece / open back	38.1 cm (15 in.) open back	38.1 cm (15 in.) open back
Tyres				
Front	15x6-6	15x6-6	15x6-6	15x6-6
Rear	18x8.5-8	20x8-8	20x8-8 / 20x10-8	20x8-8
Dimensions				
Overall Length	242 cm (96 in.) / 253 cm (100 in.)	175 cm (42.5 in.)	175 cm (69.7 in.) / 186 cm (74.2 in.)	177 cm (69.7 in.)
Overall Width (deflector down)	96 cm (38 in.) / 112 cm (44 in.)	140 cm (55.2 in.)	140 cm (55.2 in.)	154 cm (60.8 in.)
Height	108 cm (43 in.) / 114 cm (45 in.)	108 cm (52.5 in.)	113 cm (44.5 in.)	113 cm (44.5 in.)
Net Weight (no fuel)	239 kg (528 lb) / 246 kg (542 lb)	189 kg (415 lb) / 193 kg (423 lb)	201 kg (444 lb) / 210 kg (462 lb)	218 kg (479 lb)
Miscellaneous				
Cruise Control	No	No	Yes	No
Front Bumper	Optional / Included	Optional	Optional / Standard	Standard
Steering Wheel	Standard, 12 in. / Deluxe, 14 in.	Standard, 12 in.	Standard, 12 in.	Standard, 12 in.
Storage Compartment	Storage, no cover / with cover	Storage, no cover	Storage with cover	Storage, no cover
Bumper-to-Bumper Warranty**				
	2 year / 120 hours	2 year / 120 hours	2 year / 120 hours	2 year / 120 hours

*The engine horsepower and torque information are provided by the engine manufacturer to be used for comparison purposes only. Actual operating horsepower and torque will be less. Refer to the engine manufacturer's web site for additional information.

**Term limited to years or hours used, whichever comes first, and varies by model. See Agriculture and Turf equipment Warranty Statement at JohnDeere.com.au or JohnDeere.co.nz for details.

***Changing the filter removes the captured contaminants and replaces about 0.76 L of engine oil.

Attachments

Model	X700 Series	X500 Series	X300 Series	100 Series
Material Collection Systems				
2-bag (6.5-bu) Rear Bagger				■
2-bag (7-bu) Rear Bagger			■*	
3-bag (14-bu) Rear Bagger	■	■		
MCS19 (19-bu) Power Flow Cart	■	■	■*	
Front Thatcher	■	■	■	
Sun Canopy		■	■*	■
Rear Mounted Attachments				
56.7 kg (125 lb.) Electric Broadcast Spreader (Mounted)	■	■	■*	
Sprayers				
57 L (15 U.S. gal.) Tow-Behind	■	■	■	■
95 L (25 U.S. gal.) Tow-Behind	■	■	■	■
170 L (45 U.S. gal.) Tow-Behind	■	■		
57 L (15 U.S. gal.) Mounted				■
95 L (25 U.S. gal.) Mounted	■	■	■*	
Tow-Behind Equipment				
102 cm (40 in.) Thatcherator	■	■	■	■
92 cm (36 in.) Lawn Roller	■	■	■	■
102 cm (40 in.) Spiker Aerator	■	■	■	■
102 cm (40 in.) Aerator/Spreader	■	■	■	■
107 cm (42 in.) Lawn Sweeper	■	■	■	■
102 cm (40 in.) Plug Aerator	■	■	■	■
122 cm (48 in.) Plug Aerator	■	■		
80 kg (175 lb.) Broadcast Spreaders	■	■	■	■
Utility Carts**				
10P Utility Cart	■	■	■	■
13 Steel Utility Cart	■	■	■	■
17P Utility Cart	■	■	■	■
18 Steel Utility Cart	■	■	■	
Tractor Shovel 40 in.		■	■	
54 in. Tractor Shovel	■			

*Not all attachments fit on all models within Series.

**The loaded weight of the utility cart not to exceed the weight of the tractor and operator.

Committed turf experts dig into what you need. Factory-trained service and parts professionals ensure that your equipment keeps working as hard as you do. So, let's get to work, together.



JOHN DEERE

The engine horsepower and torque information are provided by the engine manufacturer to be used for comparison purposes only. Actual operating horsepower and torque will be less. Refer to the manufacturer's web site for additional information. Features, specs and attachments subject to change without notice. Before operating or riding, always refer to the safety and operating information on the vehicle, and in the Operator's Manual. Actual vehicle top speed may vary based on belt wear, tire selection, vehicle weight, fuel condition, terrain and other environmental factors. Travel responsibly on designated roads, trails or areas, respect the rights of others, and avoid sensitive areas such as meadows, lakeshores, wetlands and streams. This literature has been compiled for worldwide circulation. While general information, pictures and descriptions are provided, some illustrations and text may include finance, credit, insurance, product options and accessories NOT AVAILABLE in all regions. PLEASE CONTACT YOUR LOCAL DEALER FOR DETAILS. John Deere reserves the right to change specification, design and price of the products described in this literature without notice. John Deere's green and yellow color scheme, the leaping deer symbol, and John Deere are trademarks of Deere & Company.



JohnDeere.com.au
JohnDeere.co.nz